



System Overview

Wialon: the ultimate solution for intelligent GPS tracking and fleet management

Companies in 130+ countries choose Wialon to track 3,000,000 units worldwide. You can instantly start using the system with almost any type of AVL hardware, personal, asset, satellite trackers, and various MDVRs. The universal system goes beyond simple monitoring and allows you to launch tracking in remote areas with satellite communication option and benefit from sophisticated video monitoring solutions.

Wialon promotes advanced security, ensures precise location detection and total visibility into the performance of your assets through real-time monitoring, powerful analytics, alert and notification system allowing for early response to any emergencies.

1

Wialon: the ultimate solution for intelligent GPS tracking and fleet management

Scope of application

- ◆ Fleet performance analysis
- ◆ Mobile workforce management
- ◆ Driver behavior monitoring
- ◆ Fuel consumption control
- ◆ Video surveillance
- ◆ Real-time monitoring
- ◆ Tachography
- ◆ Hazardous/FMCG goods transportation control

System capabilities:

- ◆ GPS/LBS location detection
- ◆ Alert and notification system
- ◆ In/out geofence control
- ◆ Fuel consumption/fillings/thefts reports
- ◆ CAN bus data reading
- ◆ Route optimization/management
- ◆ Flexible report-building tools
- ◆ Data capture from sensors, counters, RFID readers, etc.

2

Trusted by clients in various business domains



Fleet management



Transport and logistics



Delivery and field services



Safety and security



Waste management



Utilities and construction



Public transportation



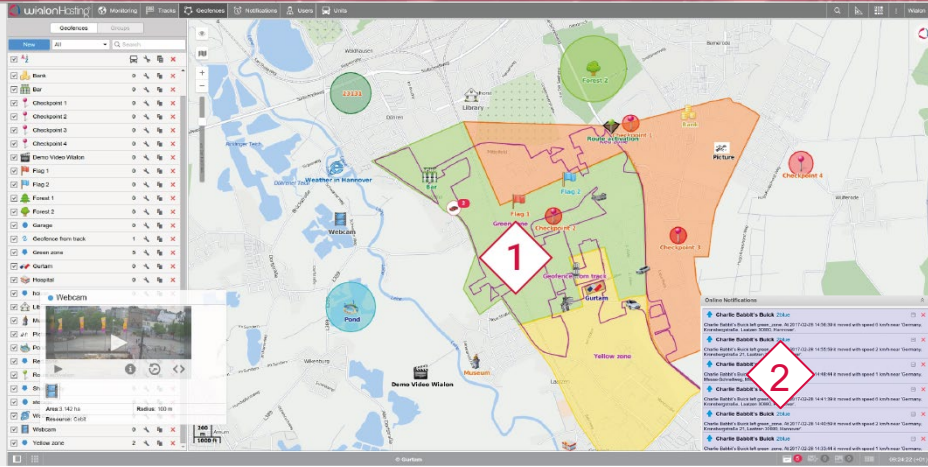
Personal tracking

Geofences and notifications: control every aspect of unit performance in/outside the specified area

The screenshot displays the Winlon Hosting Geofences interface. The main window shows a map with several geofence zones: a green circle labeled '23333', a green circle labeled 'Forest 2', a yellow polygon labeled 'Yellow zone', an orange polygon, and a green circle labeled 'Forest 1'. A red diamond with the number '1' is overlaid on the yellow zone, and another red diamond with the number '2' is overlaid on the 'Forest 1' circle. The map also shows various landmarks like 'Bank', 'Bar', 'Library', 'Museum', and 'Pond'. The left sidebar contains a list of geofences with checkboxes and icons for each. A 'Webcam' window is open, showing a live video feed of a street scene. The bottom status bar shows the coordinates '52.330239° | 9.775644°' and the time '09:24:22 (+01)'.

Geofence Name	Area (ha)	Radius (m)	Resource
Area 3	142	100	Cebit
Webcam			
Yellow zone			

Geofences and notifications: control every aspect of unit performance in/outside the specified area



1. Geofences

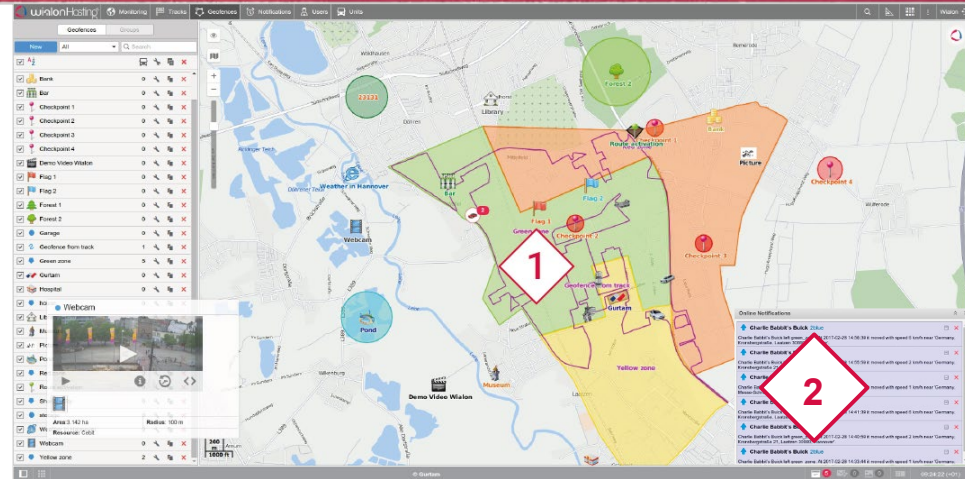
Create any number of geofences of various shapes, colors, and sizes to restrict unit movements, prevent vehicle thefts, and control its activities within a specified area.

- ◆ Control unit performance inside or outside geofences, including speed limit violations, sensor value variations, access to units, etc.
- ◆ Use geofences as addresses in reports and tooltips whenever precise address information is missing or control route performance by using geofences as checkpoints
- ◆ Benefit from dynamically updated images, screenshots, and other information bound to geofences
- ◆ Be notified on any events taking place within geofences

Geofences and notifications: control every aspect of unit performance in/outside the specified area

2. Notifications

Receive e-mail, SMS or pop-up notifications if a certain event occurs (e.g. violations, alarm button activation, sensor value variations, connection loss, idling, etc.). Notifications contain brief information on the event or can be used to trigger certain processes in the system, for instance, sending messages to a driver, executing a command, sending reports by e-mail.



Tracks and minimaps: extended information on units and routes



Tracks: Create tracks to display unit movements on the map and get quick access to unit activity data via event markers. Track Player app makes it easier to simultaneously follow several units on the map, analyze tracks and timeline events in a handy interface.

Minimaps: Use minimaps to instantly access extended unit information, current location, speed, and address or follow units with Google Street View.

Logistics: the advantageous order management service



Control all stages of delivery and field services operations

Simplify transportation arrangements, optimize transport processes, and ensure cost-saving operations.

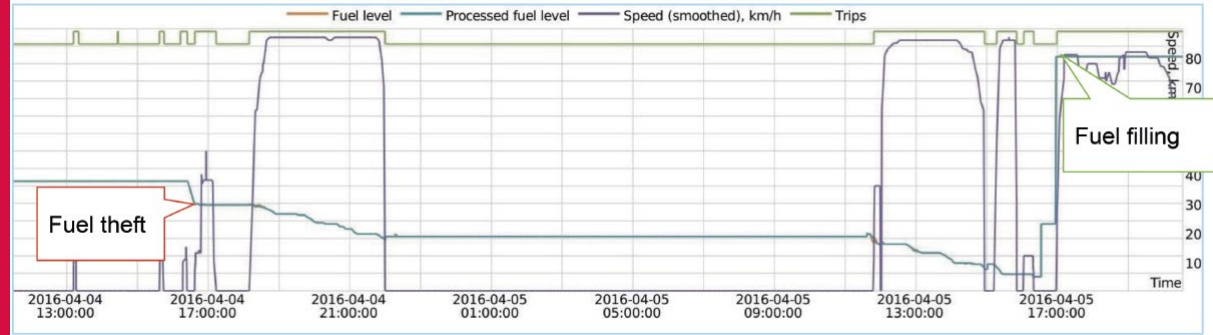
Logistics web-version

- ◆ Create or import orders with detailed description
- ◆ Select orders, vehicles and generate routes in a handy interface
- ◆ Get preliminary routes and data on the estimated arrival time and mileage
- ◆ Monitor/coordinate delivery with notifications and bidirectional communication

Logistics mobile version

- ◆ View orders in the list and on the map
- ◆ Track and evaluate delivery progress
- ◆ Generate routes using external navigation apps
- ◆ Assign order statuses, add comments and photos
- ◆ Turn your smartphone into a tracker
- ◆ Receive push notifications on orders, routes, and delivery process

Fuel consumption control: fillings and thefts detection



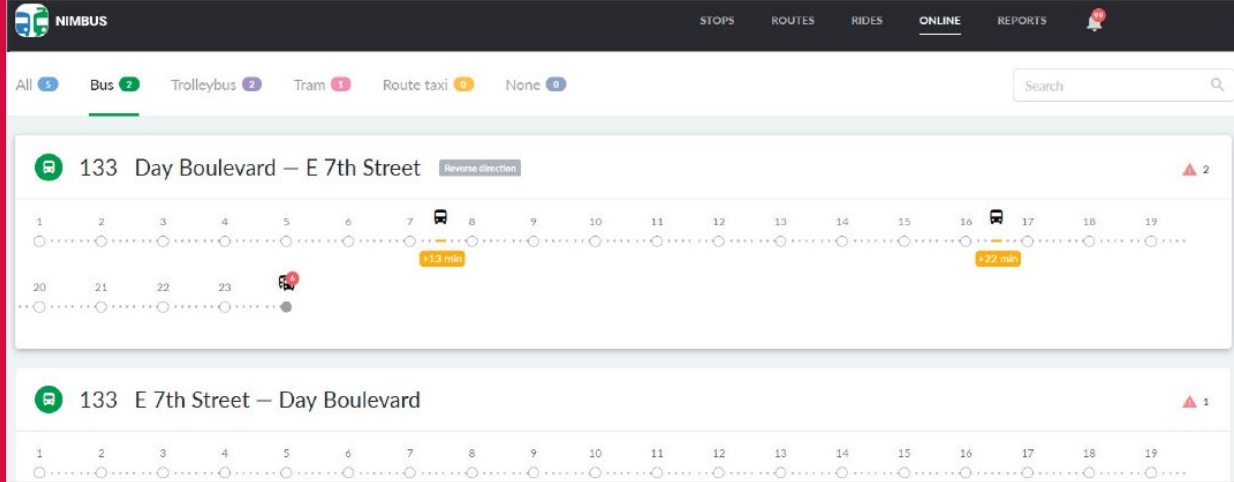
With Wialon you can detect any type of fuel misuse and control the whole cycle of fuel distribution from filling stations and dispensers to vehicles and machinery.

FLS data: analyse fuel consumption depending on a fuel level in the tank in different time points. Calculation can be performed with impulse, absolute, and instant fuel consumption sensors each providing its own benefits.

Fuel consumption by math option: create engine operation and efficiency sensors for maximum precise calculation depending on season, idling, urban and suburban cycles or high load.

Proprietary fuel management system allows to detect fuel thefts in the most complicated cases, including underfillings, card frauds, insufficient driving, siphoning, and much more.

Nimbus: the new solution for public transportation companies



Nimbus for fleet managers is designed to control vehicles on route. The service enables route planning and performance control, proper distribution of vehicles between rides and precise schedule management. The solution also ensures efficient real-time monitoring and detailed reports on fleet activity.

- ◆ User-friendly interface
- ◆ Intuitive navigation
- ◆ Multi-level access rights system
- ◆ Event-based notifications
- ◆ Handy timeline for online tracking
- ◆ API for third-party systems integrations to be released soon

Video surveillance: view and analyse data from MDVRs

The screenshot displays the Winlon Hosting web interface. On the left, there are filters for Unit (KP1_TEST), Interval (Specified interval), and Date range (2016 June 17 18:21 to 2016 June 17 18:22). Below these are statistics: Total messages: 138, Total time: 00:01:59, Distance: 1.50 km, Average speed: 45.40 km/h, and Maximum speed: 84.00 km/h. The main area features a map with a blue line indicating the vehicle's path. A video player is overlaid on the map, showing a street view from a vehicle's perspective. Below the map is a table of messages.

Time	Sp	Media
13 2016-06-17 18:21:12	0	
14 2016-06-17 18:21:13	0	
15 2016-06-17 18:21:13	0	
16 2016-06-17 18:21:14	0	
17 2016-06-17 18:21:15	---	
18 2016-06-17 18:21:15	0	
19 2016-06-17 18:21:16	---	
20 2016-06-17 18:21:16	0	53.9286383333, 27.5013616667 206 Germany, Messe-Schnellweg, Mittelfeld 30519
21 2016-06-17 18:21:17	---	
22 2016-06-17 18:21:17	0	53.9286383333, 27.5013616667 206 Germany, Messe-Schnellweg, Mittelfeld 30519
23 2016-06-17 18:21:18	---	
24 2016-06-17 18:21:18	0	53.9286383333, 27.5013616667 206 Germany, Messe-Schnellweg, Mittelfeld 30519

The 'New command' dialog box is shown with the following configuration:

- Command name: Download video online
- Command type: Download video for the last N seconds (download_last_n_se)
- Channel: Auto
- Phone number: Use any
- Indicate access rights required for users to execute this command: View item and its basic properties
- Interval in seconds (range 1-60): 30

Buttons: Cancel, OK

Video surveillance: view and analyse data from MDVRs

Wialon brings together satellite monitoring and video surveillance in one platform

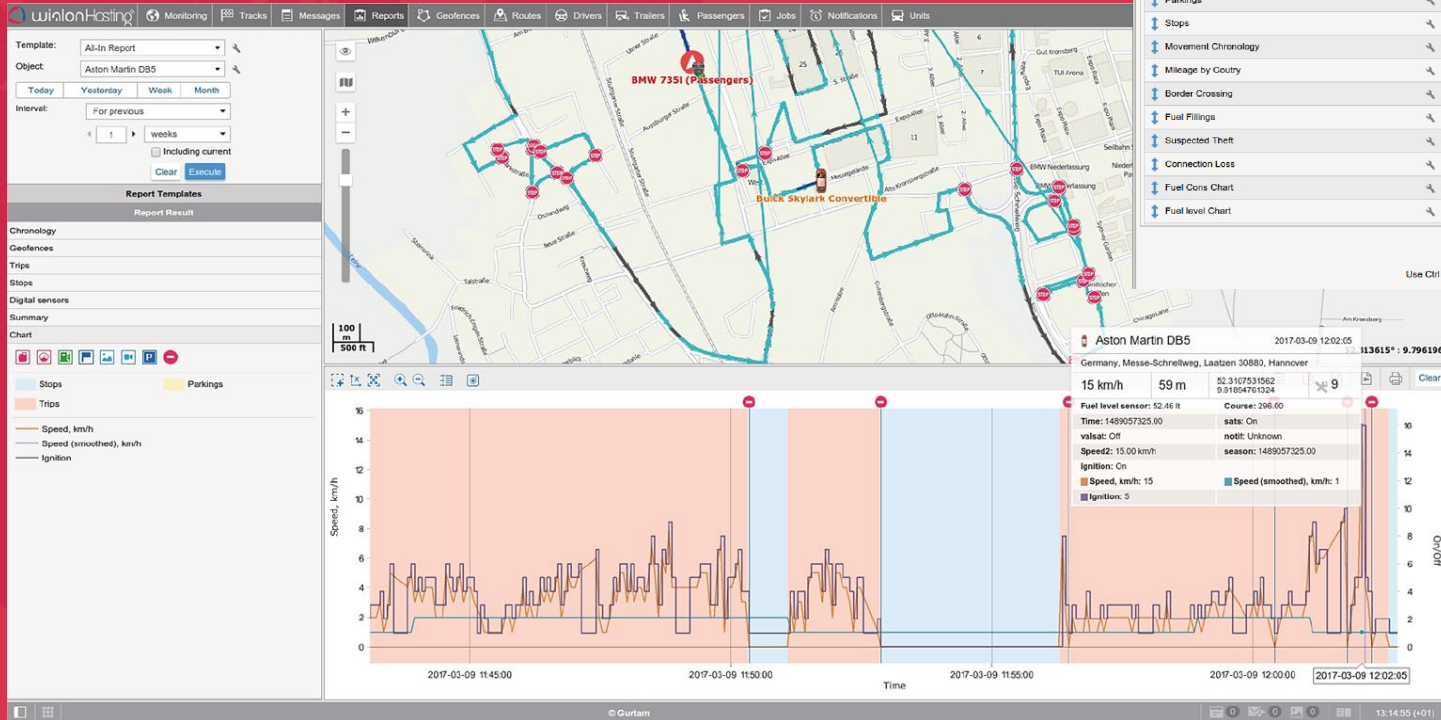
Feature-rich Wialon system, combined with MDVRs functionality, allows you to watch the assets and the events on the way with your own eyes.

Accurate unbiased video records enable precise incident analysis which in the end leads to reduced accident rates, increased fuel economy, improved road safety, and enhanced smart insurance practices.

Features

- ◆ Receive photos and view videos from tracking devices
- ◆ Generate reports with event time, location, video recordings
- ◆ Minimize traffic consumption with event-based video monitoring
- ◆ Perform deeper driver behavior analysis
- ◆ Bind video streaming to geofences
- ◆ Quickly assess current traffic situation

Advanced reports: powerful analytics in Wialon



Report Template Properties - 1. Detailed Report

Name: 1. Detailed Report Type: Unit Bind Add Table Add Chart

Contents

- Statistics
- Service Time
- Trips
- Parkings
- Stops
- Movement Chronology
- Mileage by Country
- Border Crossing
- Fuel Fillings
- Suspected Theft
- Connection Loss
- Fuel Cons Chart
- Fuel level Chart

Advanced settings

Options

- Multiple drivers/trailers
- Mileage/fuel/counters with accuracy to two decimal places
- Exclude thefts from fuel consumption
- Mileage from trips only
- Consider track-geofence intersections
- Connection loss based on GPS data
- Persian calendar
- Date and time format: yyyy-MM-dd HH:mm:ss
- Measurement system: Metric

Map output

- All messages on map
- Consider geofence visibility scale
- Event markers
- Filling markers
- Group icons
- Image markers
- Marker numbering
- Parking markers

Use Ctrl + Click to select multiple items

Cancel OK

Advanced reports: powerful analytics in Wialon

Wialon "Reports" module is used to present information on unit activity in handy tables and charts. The system allows to create flexible report templates, view reports in a browser, export them to files in various formats, and send by e-mail.

- ◆ **Report queries**

Study reports online, get scheduled and event-based reports or execute them in one click from the monitoring panel.

- ◆ **Handy data management**

Use multi-level grouping, sorting, detalization mode, interval filtration, and time limitations for data display.

- ◆ **Informative charts**

Study charts with auto-scaling, zoom, single/multiple axes view, message points tracing; add backgrounds, event markers, and different line colors.

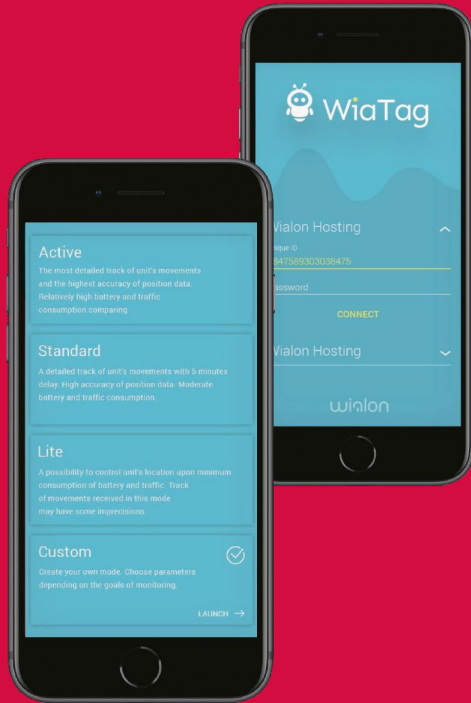
- ◆ **Mapping options**

Take advantage of a scalable map featuring event markers, geofences, units, and tracks with the option to attach it to a report.

- ◆ **Precise information**

Enjoy precise addresses, statistics, and information on 300+ monitoring parameters.

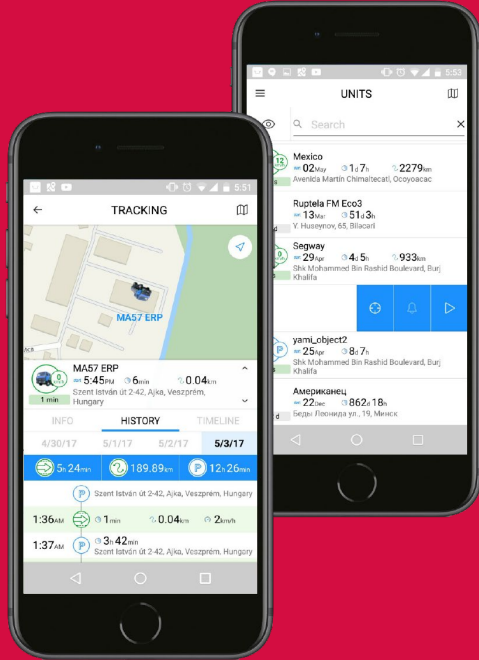
WiaTag: GPS tracker in your smartphone



WiaTag is an effective and easy-to-use iOS/Android app turning your device into a GPS tracker. The application relieves you from costs associated with hardware acquisition and allows to start effective personal tracking and workforce management with a single mobile device.

- ◆ Maximum precise location detection to quickly find and track personnel
- ◆ Option to track employees outside their vehicles during field operations
- ◆ Quick sending of photos, locations, and SOS-messages
- ◆ Smart data collection mode to save battery life and traffic
- ◆ Preset and custom user modes for quick configuration
- ◆ Tracing of the latest data and sending of unit current status
- ◆ Remote configuration from Wialon interface

Wialon mobile application



Wialon mobile app comprises core functionality of the system in a user-friendly mobile interface for you to continue GPS tracking outside the office. From around the world you continue getting real-time data on vehicles and stationary units with detailed track history available on each

- ◆ Manage unit list to get relevant information on vehicle movements, location, ignition state, and data actuality
- ◆ Map mode to access units, geofences, tracks, and event markers on the map or detect your own location
- ◆ Tracking mode to monitor the precise location and critical parameters of a particular unit
- ◆ Timeline tool to get the extended data on events
- ◆ Event-based notifications to receive right in the app
- ◆ Locator functionality to create links and share unit locations
- ◆ Sending of core commands from “Units” and “Tracking” tabs

For advanced user experience fast switch to Dashboard app has been implemented bringing the KPIs of the fleet to your fingertips.